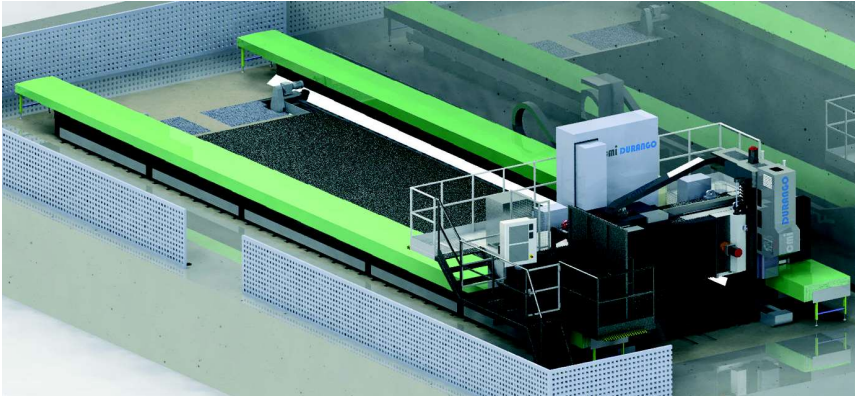


**MODEL****FGD Max****APPLICATIONS****RAIL, AUTOMOTIVE, CAPITAL ASSETS**

Mobile Bridge Gantry Milling Machine, with fixed table and



crossbeam for machining large parts, with high dynamic range and precision and efficient chip removal.

Suitable for a range of applications, primarily Rail, Automotive and Capital Assets.

**TECHNICAL FEATURES**

Longitudinal travel (X) (mm)	3,000 - 40,000
Transverse travel (Y) (mm)	1,500 - 10,000
Vertical travel (Z) (mm)	500 - 2,000
Table length (mm)	3,000 - 40,000
Table width (mm)	1,000 - 10,000
Feed rate (mm/min)	Up to 30,000
Drives (X, Y, Z axes)	X, Y Rack and pinion. * Double rack and pinion Z Ball screw
Permissible weight on the table (kg/m <sup>2</sup> )	2,000 - 15,000 * According to requirements
Head power (kW)	Up to 100
Tool magazine	*

**ACCESSORIES**

<u>Straight Head</u>	
Power (kW)	Up to 100
Speed (rpm)	Up to 10,000
Internal/external cooling (bar)	Up to 50
<u>Semi-universal Head</u>	
Power (kW)	Up to 60
Speed (rpm)	Up to 4,000
Internal/external cooling (bar)	Up to 40
<u>Universal Head</u>	
Power (kW)	Up to 40
Speed (rpm)	Up to 4,000
Positioning (C) / (A)	1° / 1° 2.5° / 2.5°

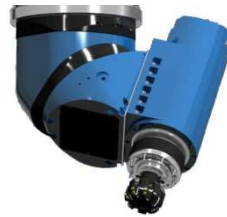
	1° / 2.5° 2.5° / 1°
Internal/external cooling (bar)	*
<i>Continuous Heads (Electro-spindle)</i>	*
Power (kW)	Up to 60
Speed (rpm)	Up to 7,000 - 24,000
Internal/external cooling (bar)	Up to 50
<u>Special Heads</u>	*
Change of Heads	*
Chip Conveyors	*

## SYSTEMS

Suction System	*
Suction Equipment	*
Coolant Reservoir*	1,000 - 2,000 litres*
Filtration Equipment	*
Static tool changer	Up to 20
Dynamic tool changer	30-40-60-80

\*Optional

## HEADS



\*Optional