

MODEL**FPF Max****APPLICATIONS****AUTOMOTIVE, CAPITAL ASSETS, RAIL**

The Fixed Bridge Milling Machine Max enables high performance while maintaining high precision and high chip removal capacity.

It is mainly targeted at the Capital Assets and Automotive sectors, but also very useful for the Rail sector.

TECHNICAL FEATURES

Table length (mm)	3,000 - 6,000
Table width (mm)	1,500 - 2,000 - 2,500 - 3,000
Distance between columns (mm)	2,000 - 4,000
Longitudinal travel (X) (mm)	3,000 - 6,000
Transverse travel (Y) (mm)	2,500 - 4,000
Vertical travel (Z) (mm)	1,000 - 1,250 - 1,500
Feed rate (X axis) (mm/min)	Up to 24,000
Feed rate (Y axis) (mm/min)	Up to 24,000
Feed rate (Z axis) (mm/min)	Up to 24,000
Drives (X, Y, Z axes)	X, Y Double rack and pinion Z Ball screw
Permissible weight on the table (kg/m ²)	3,000 - 15,000 * According to requirements
Rotation speed (rpm)	4,000 - 24,000
Maximum turning power (kW)	Up to 100

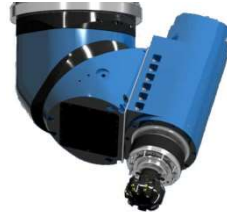
ACCESSORIES

<u><i>Straight Head</i></u>	
Power (kW)	Up to 100
Speed (rpm)	4,000 - 24,000
Internal/external cooling (bar)	Up to 50
<u><i>Continuous Head</i></u>	
Power (kW)	Up to 60
Speed (rpm)	Up to 24,000
Internal/external cooling (bar)	Up to 50
<u><i>Semi-universal Head</i></u>	
Power (kW)	Up to 60
Speed (rpm)	Up to 4,000
Internal/external cooling (bar)	Up to 40
<u><i>Universal Head</i></u>	
Power (kW)	Up to 40
Speed (rpm)	Up to 4,000
Positioning (C) / (A)	1° / 1° 2.5° / 2.5° 1° / 2.5° 2.5° / 1°
Internal/external cooling (bar)	*
<u><i>Special Heads</i></u>	
	*
Change of Heads	*

STANDARD AND OPTIONAL EQUIPMENT

<u>STANDARD EQUIPMENT</u>	
Numerical Control	Heidenhain, Siemens, Fagor, Fanuc
Electronic handwheel	
Air-conditioned electrical cabinet	
Guide Lines in the Axes (X, Y, Z)	
Lighting in the work area	
Hydraulic system	
Direct Feedback	
Basic Fairing	
Tele - Service	
<u>OPTIONAL EQUIPMENT</u>	
Measuring probes, tools and parts	*
Automatic tool changer	30, 40, 60, 120*
Static tool changer	6 to 12*
Friction guides on the (Z) axis	*
Coolant Systems	*
Chip Conveyors	*
Integral Fairing	*

*Optional



*Optional